

Discharge Measurement Summary

Site name WCanal5
Site number 01
Operator(s) TMiller
File name WestCanal_20230518_1141.ft
Comment

Start time	5/18/2023 11:41 AM	Sensor type	Top Setting
End time	5/18/2023 12:55 PM	Handheld serial number	FT2H2219029
Start location latitude	42.810	Probe serial number	FT2P2219014
Start location longitude	-118.871	Probe firmware	1.30
Calculations engine	FlowTracker2	Handheld software	1.7

# Stations	Avg interval (s)	Total discharge (m³/s)
22	40	0.8218

Total width (m)	Total area (m²)	Wetted Perimeter (m)
5.334	3.39435	5.839

Mean SNR (dB)	Mean depth (m)	Mean velocity (m/s)
46	0.636	0.2421

Mean temp (°C)	Max depth (m)	Max velocity (m/s)
9.186	0.866	0.3597

Discharge Uncertainty		
Category	ISO	IVE
Accuracy	1.0%	1.0%
Depth	0.1%	1.0%
Velocity	0.3%	2.8%
Width	0.1%	0.1%
Method	0.9%	
# Stations	2.3%	
Overall	2.7%	3.2%

Discharge equation	Mid Section
Discharge uncertainty	IVE
Discharge reference	Rated

Data Collection Settings	
Salinity	0.000 PSS-78
Temperature	-
Sound speed	-
Mounting correction	0.000 %

Summary overview

No changes were made to this file
Quality control warnings



Discharge Measurement Summary

Site name WCanal5
Site number 01
Operator(s) TMiller
File name WestCanal_20230518_1141.ft
Comment

Station Warning Settings

Station discharge OK

Station discharge < 5.00%

Station discharge caution

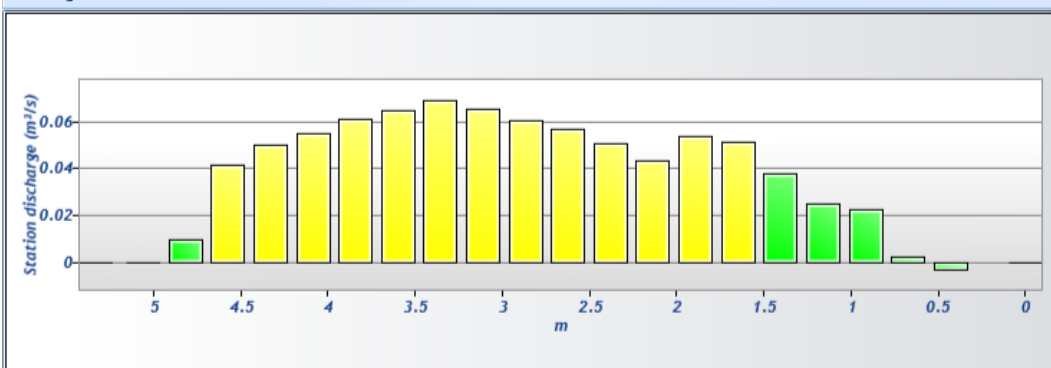
5.00% >= Station discharge < 10.00%

Station discharge warning

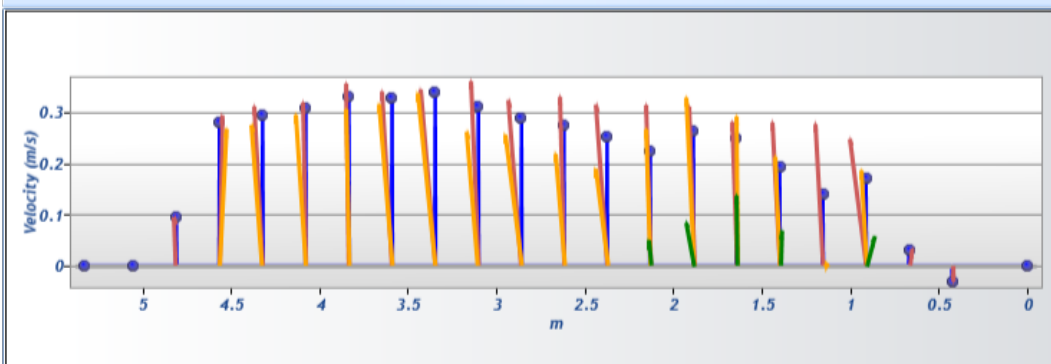
Station discharge >= 10.00%



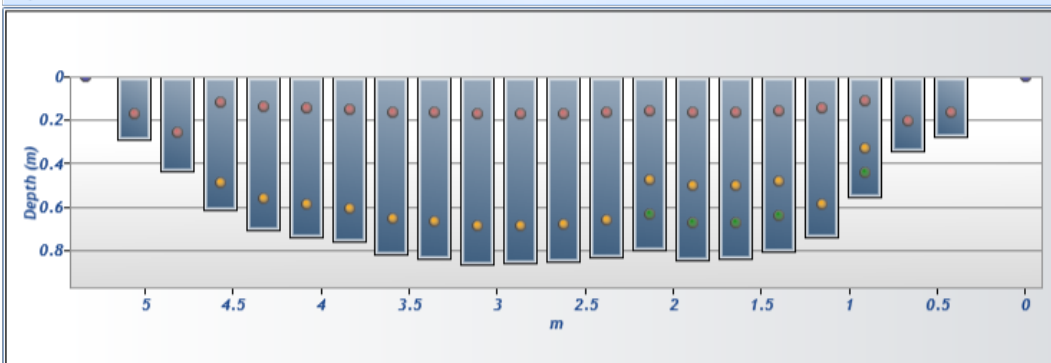
Discharge chart

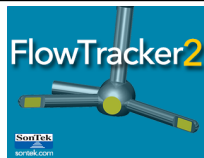


Velocity chart



Depth chart

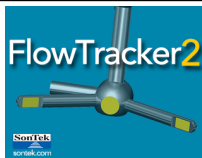




Discharge Measurement Summary

Site name	WCanal5
Site number	01
Operator(s)	TMiller
File name	WestCanal_20230518_1141.ft
Comment	

Measurement results													
St#	Time	Location (m)	Method	Depth (m)	%Depth	Measured Depth (m)	Samples	Velocity (m/s)	Correction	Mean Velocity (m/s)	Area (m ²)	Flow (m ³ /s)	%Q
0	11:41 AM	0.000	None	0.000	0.0000	0.000	0	0.0000	1.0000	-0.0305	0.00000	0.0000	0.00 ✓
1	11:41 AM	0.427	0.6	0.277	0.6000	0.166	80	-0.0305	1.0000	-0.0305	0.09300	-0.0028	-0.34 ✓
2	11:45 AM	0.671	0.6	0.338	0.6000	0.203	80	0.0328	1.0000	0.0328	0.08250	0.0027	0.33 ✓
3	11:48 AM	0.914	0.2/0.6/0.8	0.555	0.2000	0.111	80	0.2471	1.0000	0.1699	0.13527	0.0230	2.80 ✓
3	11:48 AM	0.914	0.2/0.6/0.8	0.555	0.6000	0.333	80	0.1865	1.0000	0.1699	0.13527	0.0230	2.80 ✓
3	11:48 AM	0.914	0.2/0.6/0.8	0.555	0.8000	0.444	80	0.0595	1.0000	0.1699	0.13527	0.0230	2.80 ✓
4	11:53 AM	1.158	0.2/0.8	0.738	0.2000	0.148	80	0.2763	1.0000	0.1399	0.17986	0.0252	3.06 ✓
4	11:53 AM	1.158	0.2/0.8	0.738	0.8000	0.590	80	0.0036	1.0000	0.1399	0.17986	0.0252	3.06 ✓
5	11:58 AM	1.402	0.2/0.6/0.8	0.808	0.2000	0.162	80	0.2794	1.0000	0.1931	0.19695	0.0380	4.63 ✓
5	11:58 AM	1.402	0.2/0.6/0.8	0.808	0.6000	0.485	80	0.2124	1.0000	0.1931	0.19695	0.0380	4.63 ✓
5	11:58 AM	1.402	0.2/0.6/0.8	0.808	0.8000	0.646	80	0.0682	1.0000	0.1931	0.19695	0.0380	4.63 ✓
6	12:04 PM	1.646	0.2/0.6/0.8	0.841	0.2000	0.168	80	0.2805	1.0000	0.2500	0.20513	0.0513	6.24 ✓
6	12:04 PM	1.646	0.2/0.6/0.8	0.841	0.6000	0.505	80	0.2914	1.0000	0.2500	0.20513	0.0513	6.24 ✓
6	12:04 PM	1.646	0.2/0.6/0.8	0.841	0.8000	0.673	80	0.1365	1.0000	0.2500	0.20513	0.0513	6.24 ✓
7	12:09 PM	1.890	0.2/0.6/0.8	0.844	0.2000	0.169	80	0.3104	1.0000	0.2630	0.20587	0.0541	6.59 ✓
7	12:09 PM	1.890	0.2/0.6/0.8	0.844	0.6000	0.507	80	0.3280	1.0000	0.2630	0.20587	0.0541	6.59 ✓
7	12:09 PM	1.890	0.2/0.6/0.8	0.844	0.8000	0.675	80	0.0855	1.0000	0.2630	0.20587	0.0541	6.59 ✓
8	12:14 PM	2.134	0.2/0.6/0.8	0.796	0.2000	0.159	80	0.3135	1.0000	0.2238	0.19398	0.0434	5.28 ✓
8	12:14 PM	2.134	0.2/0.6/0.8	0.796	0.6000	0.477	80	0.2664	1.0000	0.2238	0.19398	0.0434	5.28 ✓
8	12:14 PM	2.134	0.2/0.6/0.8	0.796	0.8000	0.636	80	0.0491	1.0000	0.2238	0.19398	0.0434	5.28 ✓
9	12:19 PM	2.377	0.2/0.8	0.829	0.2000	0.166	80	0.3142	1.0000	0.2518	0.20216	0.0509	6.19 ✓
9	12:19 PM	2.377	0.2/0.8	0.829	0.8000	0.663	80	0.1893	1.0000	0.2518	0.20216	0.0509	6.19 ✓
10	12:22 PM	2.621	0.2/0.8	0.850	0.2000	0.170	80	0.3292	1.0000	0.2736	0.20736	0.0567	6.90 ✓
10	12:22 PM	2.621	0.2/0.8	0.850	0.8000	0.680	80	0.2181	1.0000	0.2736	0.20736	0.0567	6.90 ✓
11	12:25 PM	2.865	0.2/0.8	0.860	0.2000	0.172	80	0.3228	1.0000	0.2892	0.20959	0.0606	7.38 ✓
11	12:25 PM	2.865	0.2/0.8	0.860	0.8000	0.688	80	0.2555	1.0000	0.2892	0.20959	0.0606	7.38 ✓
12	12:28 PM	3.109	0.2/0.8	0.866	0.2000	0.173	80	0.3597	1.0000	0.3105	0.21108	0.0655	7.98 ✓
12	12:28 PM	3.109	0.2/0.8	0.866	0.8000	0.693	80	0.2613	1.0000	0.3105	0.21108	0.0655	7.98 ✓
13	12:32 PM	3.353	0.2/0.8	0.838	0.2000	0.168	80	0.3435	1.0000	0.3395	0.20439	0.0694	8.45 ✓
13	12:32 PM	3.353	0.2/0.8	0.838	0.8000	0.671	80	0.3356	1.0000	0.3395	0.20439	0.0694	8.45 ✓
14	12:35 PM	3.597	0.2/0.8	0.817	0.2000	0.163	80	0.3398	1.0000	0.3272	0.19918	0.0652	7.93 ✓
14	12:35 PM	3.597	0.2/0.8	0.817	0.8000	0.653	80	0.3146	1.0000	0.3272	0.19918	0.0652	7.93 ✓
15	12:38 PM	3.840	0.2/0.8	0.759	0.2000	0.152	80	0.3551	1.0000	0.3301	0.18506	0.0611	7.43 ✓
15	12:38 PM	3.840	0.2/0.8	0.759	0.8000	0.607	80	0.3050	1.0000	0.3301	0.18506	0.0611	7.43 ✓
16	12:41 PM	4.084	0.2/0.8	0.741	0.2000	0.148	80	0.3181	1.0000	0.3062	0.18060	0.0553	6.73 ✓
16	12:41 PM	4.084	0.2/0.8	0.741	0.8000	0.593	80	0.2942	1.0000	0.3062	0.18060	0.0553	6.73 ✓
17	12:44 PM	4.328	0.2/0.8	0.704	0.2000	0.141	80	0.3108	1.0000	0.2927	0.17168	0.0503	6.12 ✓
17	12:44 PM	4.328	0.2/0.8	0.704	0.8000	0.563	80	0.2746	1.0000	0.2927	0.17168	0.0503	6.12 ✓
18	12:47 PM	4.572	0.2/0.8	0.613	0.2000	0.123	80	0.2930	1.0000	0.2800	0.14939	0.0418	5.09 ✓
18	12:47 PM	4.572	0.2/0.8	0.613	0.8000	0.490	80	0.2669	1.0000	0.2800	0.14939	0.0418	5.09 ✓
19	12:50 PM	4.816	0.6	0.436	0.6000	0.262	80	0.0948	1.0000	0.0948	0.10628	0.0101	1.23 ✓
20	12:52 PM	5.060	0.6	0.290	0.6000	0.174	80	-0.0002	1.0000	-0.0002	0.07502	0.0000	0.00 ✓
21	12:55 PM	5.334	None	0.000	0.0000	0.000	0	0.0000		-0.0002	0.00000	0.0000	0.00 ✓



Discharge Measurement Summary

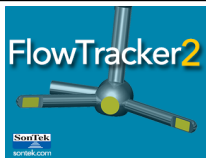
Site name WCanal5
Site number 01
Operator(s) TMiller
File name WestCanal_20230518_1141.ft
Comment

Quality Control Settings

Maximum depth change 50.00%
Maximum spacing change 100.00%
SNR threshold 10 dB
Standard error threshold 0.0100 m/s
Spike threshold 10.00%
Maximum velocity angle 20.0 deg
Maximum tilt angle 5.0 deg

Quality control warnings

St#	Time	Location (m)	Method	Depth (m)	%Depth	Measured Depth (m)	Warnings
1	11:41 AM	0.427	0.6	0.277	0.6000	0.166	Velocity Angle > QC
2	11:45 AM	0.671	0.6	0.338	0.6000	0.203	Velocity Angle > QC
3	11:48 AM	0.914	0.2/0.6/0.8	0.555	0.2000	0.111	Velocity Angle > QC
3	11:48 AM	0.914	0.2/0.6/0.8	0.555	0.6000	0.333	Velocity Angle > QC
3	11:48 AM	0.914	0.2/0.6/0.8	0.555	0.8000	0.444	Velocity Angle > QC
7	12:09 PM	1.890	0.2/0.6/0.8	0.844	0.2000	0.169	Velocity Angle > QC
7	12:09 PM	1.890	0.2/0.6/0.8	0.844	0.6000	0.507	Velocity Angle > QC
7	12:09 PM	1.890	0.2/0.6/0.8	0.844	0.8000	0.675	Velocity Angle > QC
9	12:19 PM	2.377	0.2/0.8	0.829	0.2000	0.166	Velocity Angle > QC
9	12:19 PM	2.377	0.2/0.8	0.829	0.8000	0.663	Velocity Angle > QC
11	12:25 PM	2.865	0.2/0.8	0.860	0.2000	0.172	Velocity Angle > QC
11	12:25 PM	2.865	0.2/0.8	0.860	0.8000	0.688	Velocity Angle > QC
12	12:28 PM	3.109	0.2/0.8	0.866	0.2000	0.173	Boundary Interference, Large SNR Variation, SNR Threshold Variation
12	12:28 PM	3.109	0.2/0.8	0.866	0.8000	0.693	Boundary Interference, Large SNR Variation, SNR Threshold Variation
20	12:52 PM	5.060	0.6	0.290	0.6000	0.174	SNR Threshold Variation, High % Spikes
21	12:55 PM	5.334	None	0.000	0.0000	0.000	Water Depth > QC



Discharge Measurement Summary

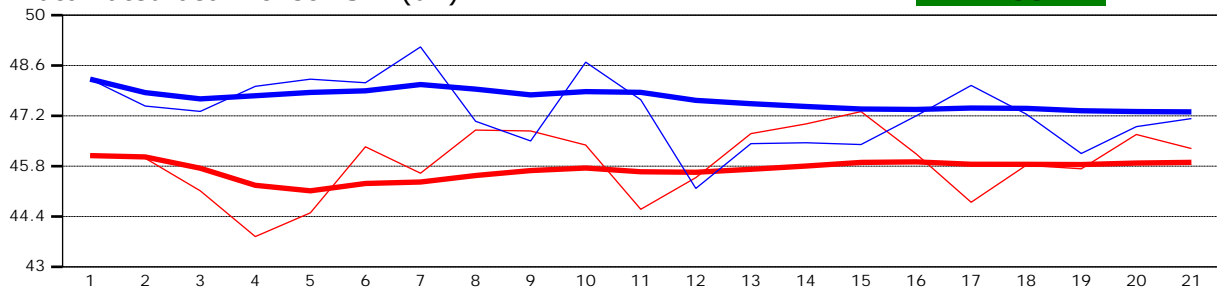
Site name WCanal5
Site number 01
Operator(s) TMiller
File name WestCanal_20230518_1141.ft
Comment

Beam 1	
Beam 2	

Automated beam check Start time 5/18/2023 11:39:53 AM

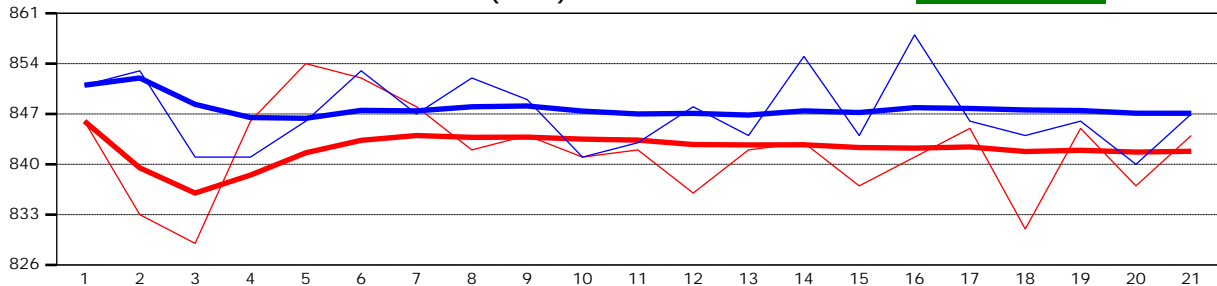
Automated beam check SNR(dB)

PASS



Automated beam check Noise level(cnts)

PASS



Automated beam check Quality control warnings

No quality control warnings



Discharge Measurement Summary

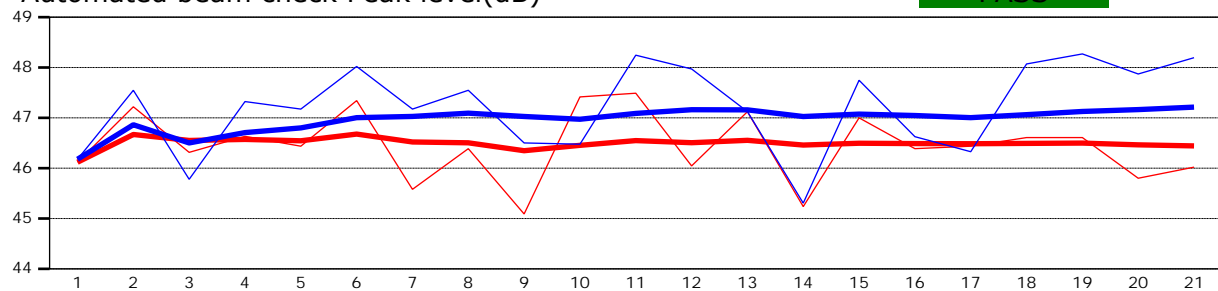
Site name WCanal5
Site number 01
Operator(s) TMiller
File name WestCanal_20230518_1141.ft
Comment

Beam 1	
Beam 2	

Automated beam check Start time 5/18/2023 11:39:53 AM

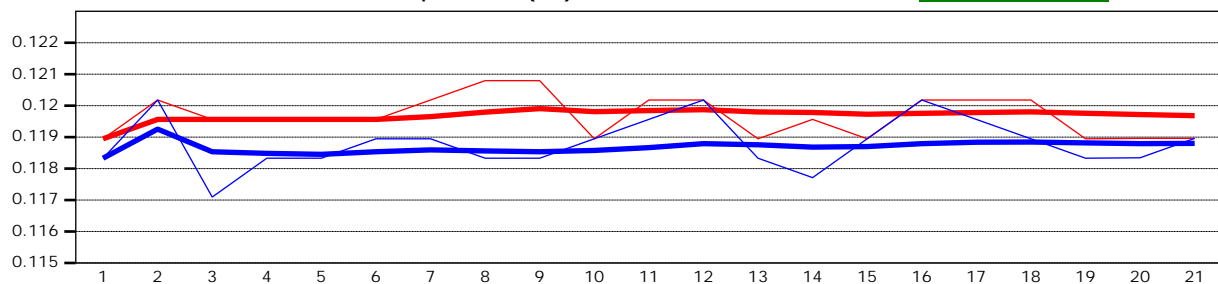
Automated beam check Peak level(dB)

PASS



Automated beam check Peak position(m)

PASS



Automated beam check Quality control warnings

No quality control warnings